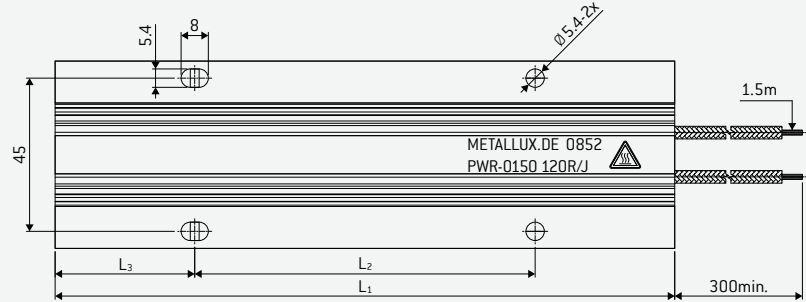
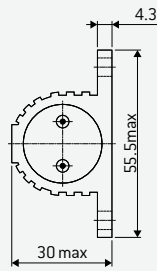


# PWR-O WIRE POWER RESISTOR IN ALUMINIUM CASING



Wire resistors in aluminium profile combine the high pulse load capacity of conventional resistor materials with optimised thermal conduction and a high degree of protection. Assembly on a surface with good thermal conduction properties improves the heat dissipation additionally and leads to an increased load capacity. The series PWR-O satisfies the requirements of UL508 and is particularly suitable for applications as brake resistor, charging and discharging resistor, or also as heating resistor.



## TYPE SELECTION AND DIMENSIONS

Type	Without cooling		With cooling	Resistance values	Max. voltage	L <sub>1</sub>	L <sub>2</sub>	L <sub>3</sub>	/g/
	P <sub>NDC</sub> =30% /W/	P <sub>NDC</sub> =100% /W/	P <sub>N</sub> at 25°C			mm	mm		
PWR-O 150	120	45	150 W	1R6 – 180R	1000 V $\approx$	72	40	16	195
PWR-O 200	160	60	200 W	2R2 – 240R	1000 V $\approx$	87	55	16	235
PWR-O 300	240	70	300 W	4R7 – 430R	1500 V $\approx$	137	85	26	325
PWR-O 400	320	80	400 W	6R8 – 620R	2000 V $\approx$	182	100	41	415
PWR-O 500	400	100	500 W	9R1 – 910R	2300 V $\approx$	242	160	41	530
PWR-O 600	480	120	600 W	12R – 1K2	2800 V $\approx$	302	220	41	670

## SAMPLE ORDER

PWR-0150 56 R/J 300 mm connection lines

**Inductance** < 0.2 mH at 1 KHz

**Time constant** 6.6 to 7.1 min.

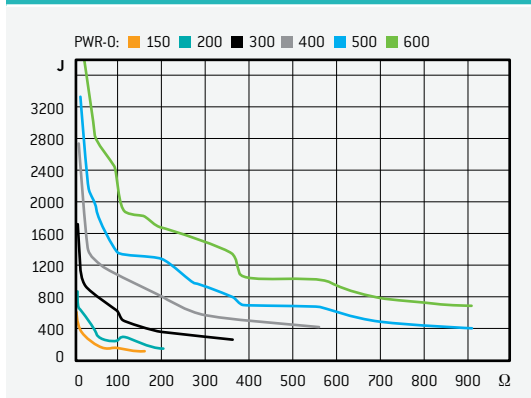
**Degree of protection** IP55 (opt. IP65)

**Storage temperature** –10°C at +50°C

PWR-0Txxx version with integrated temperature switch for all performance classes.

The duty cycle DC in percent is based on a cycle time of 120 sec.

## PULSE ENERGY



## PARAMETER

**Max. surface temperature** 250°C

**Tolerance**  $\pm 5\%$

**Temperature coefficient TC**  $\leq \pm 150$  ppm/K

**Stability at P<sub>nominal</sub> @ 25°C, 1000 h**  $\pm 5\%$

**Max. overload capacity** 10 x P<sub>NDC</sub>=100%, 5 sec

**Insulation resistance at 500VDC**  $\geq 10$  G $\Omega$

**Test voltage** 4000 V $\approx$

**Connection lines**

UL SIFGL wire line AWG16 style 3071, 200°C, 600V  
UL PTFE wire line AWG16 style 1199, 200°C, 600V  
UL FEP wire line AWG16 style 10203, 200°C, 600V